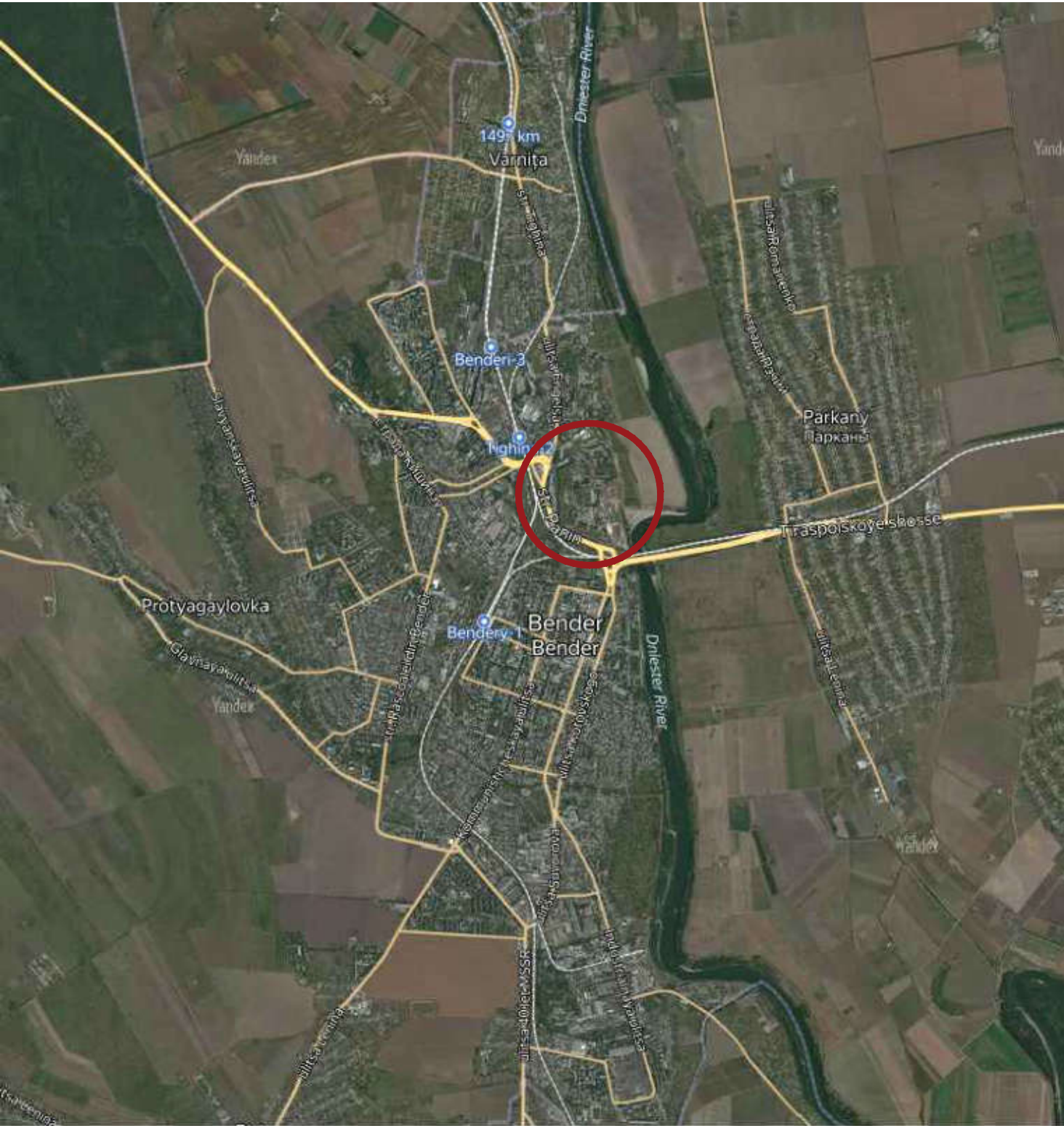


Location of the city of Bender



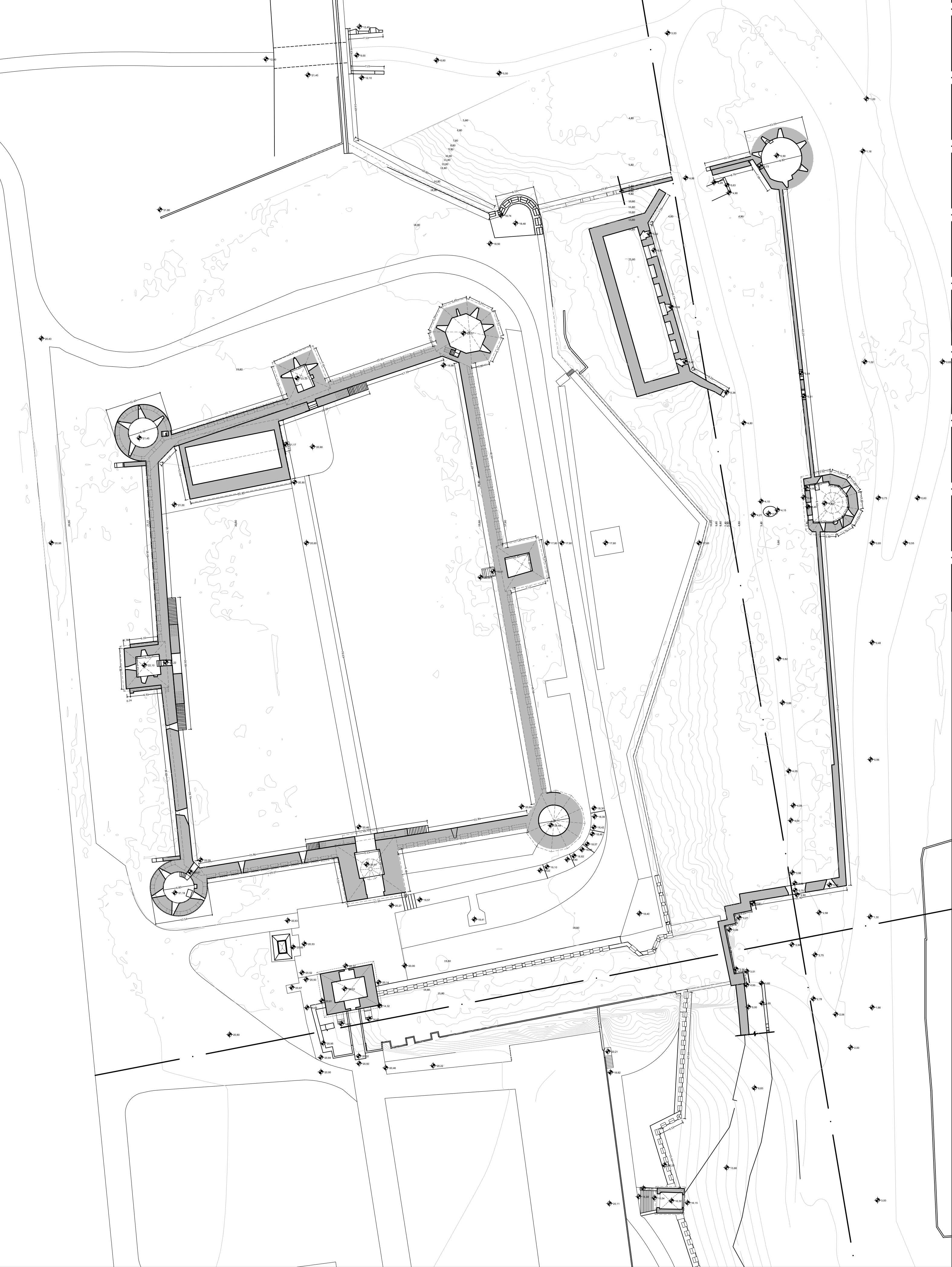
Location of the Fortress into the city of Bender




Location of the Citadel and the Lower Fortress into the Bender Fortress




General Planimetry - scale 1:500





This project is funded by the European Union


European Union Confidence Building Measures Programme
Programme Unione Europea "Misure di Promozione e Innesadimento"
Программа Европейского Союза "Меры по укреплению доверия"



CLIENT: European Union Delegation to Moldova through its operational contractor UNDP

Technical Expertise and develop Detailed Technical Design for
CONSERVATION AND RESTORATION WORKS OF BENDER FORTRESS (Phase I)

DETAILED TECHNICAL DESIGN



studio
Berlucchi
società di ingegneria
dal 1920

TEAM LEADER
Studio Berlucchi srl
Arch. Eng. Nicola Berlucchi - Eng. Nicola Fumagalli
With the collaboration of
Arch. Flavia Mainardi, Eng. Alessandro Trevisi
www.studioberlucchi.it

INTERNATIONAL EXPERTS

Prof. Donatella Fiorani
Conservation expert

GEOGRA
www.geogra.it

GEOGRA' srl
Architectonical Survey

Prof. Carlo Blasi
Structure restoration expert

SOING
SOING srl
Diagnostics and analysis

Arch. Carlotta Cocco
GBC HB Expert

LOCAL EXPERTS

Arch. Serghei Garconița
Certified local Architect
series 2017-P number 1608

Arch. Corina Fisticanu
Assistant local Architect

Dr. Sergiu Musteata
Archaeologist

Eng. Stanislav Condratenco
Certified local Engineer
series 2018-P number 0089

Eng. Evgheni Cutia
Assistant local Engineer

Dr. Igor Nicoara
Geologist

C		
B		
A		
07-2020	first emission	C226_REA_001.dwg
DATE	REVISION	FILE NAME

TITLE:
GEOMETRICAL AND ARCHITECTONICAL SURVEY
Positioning in the territory and general plan


ASSIGN. CODE	DOCUMENT CODE				
	PRATICA	PARTE	DISC. PROG.	NUMERO	REV.
C226	-	R	EA	001	-

REPRESENTATION SCALE: 1:500

INTERNAL CODE:

EXPERT STAMP AND SIGNATURE:

This project is funded by the European Union and implemented by the United Nations Development Programme



Empowered lives.
Resilient nations.